



Shooting Ranges • Bullet Traps
Shoot Houses • Target Systems





The Savage Range Systems Mission

To Offer the Safest and Cleanest Environment Possible for Shooters and Range Personnel While Providing Innovative, Durable and Cost-Effective Range Equipment

Savage Range Systems is the most advanced shooting range equipment manufacturer, used by virtually all gun manufacturers and both military and civilian shooting centers, with ranges for every size AND budget- from wet to dry to rubber traps. Advanced designs minimize pollutants resulting in safer shooting environments for both shooters and employees. Our Bullet Traps provide the safest bullet collection, clearing stations and firearms testing for both law enforcement and gun manufacturers. Savage Range Systems target systems are designed as superior shooting solutions.

Savage Range Systems ... the Better Choice

The reason all major firearms manufacturers, ammunition manufacturers, and demanding law enforcement agencies have turned to Savage Range Systems' line of traps for over 25 years is simple ... they work better and are safer! Shooters and personnel are no longer exposed to excessive lead dust with a Wet Snail™ Trap. Range personnel routinely have blood lead levels tested in accordance with OSHA requirements, and when used properly there have been no reported cases of elevated blood lead levels after a Wet Snail Trap was installed.

Maintenance downtime means reduced revenue. That's why our system is engineered to have one of the lowest maintenance requirements for any bullet trap. This results in lower operating costs and maximizes range availability for training and revenue generation. Savage Range Systems shooting ranges offer lower operating costs, greater recycling income, ease of operation and less down-time. The longevity and ability to sustain high volume of fire in our ranges is unsurpassed.

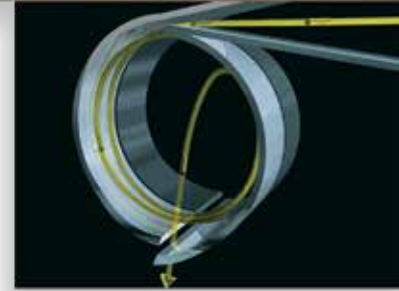
U.S. Patent No. 6,732,628
U.S. Patent No. 7A34,811
U.S. Patent No. 8A59,651
U.S. Patent No. 9A23,217





- Wet Traps
- Dry Traps
- Air Barrier System
- Rubber Traps





Deceleration Chamber

Savage Range Systems Wet Traps

The Savage Range Systems Wet Snail Trap Captures Airborne Lead at the Trap, Protecting Shooters AND Employees

The Savage Range Systems Snail™ System uses low angled ramps to direct bullets into our circular Deceleration Chamber. This slows bullets through a circular motion, where they decelerate until dropping into a collection container. To protect shooters and employees from lead particles in the air, our WetTraps incorporate a biodegradable aqueous solution within the trap to capture those particles before they become airborne. This results in a safer, cleaner environment - without using expensive vacuum systems - extending the interval between filter changes on your HVAC system. The Snail1™ System can be safely fired into with rifles and handguns at "point blank" range without creating a ricochet hazard. Cross range firing can also be safely undertaken.

All range traps (except our rubber traps) are available with an Automatic Bullet Recovery System to provide hands-free operation. Detailed technical specifications for all traps can be found at SavageRangeSystems.com. For pricing, just give us a call or fill out our "Contact Request Form" on the site.





Big Mouth Snail



Savage Range Systems Dry Traps

The Savage Range Systems Dry Trap is used both indoors and outdoors, but is the recommended trap for outdoor installations. Our Dry Traps include all of the benefits of the Snail™ Trap system- with its low angle ramps which prevent bullet ricochet or the breakdown of ramp material over long periods of use. The Deceleration Chamber found in our Wet and Dry Traps allows the bullet to lose energy and drop into a container. Savage Range Systems also offers two methods of collecting spent rounds for easier maintenance and recycling.

The Big Mouth Snail

The Big Mouth Snail (shown above) eliminates the vertical dividers at the throat of the trap, so shooters need not worry about cross range tactical training. From the shooter's perspective the throat is completely open across the full width of the bullet trap. The Big Mouth Snail (Patent# 8,459,651) is available on all Snail Traps, wet or dry, rifle or handgun.

Savage Range Systems Air Barrier System

The ultimate contaminant collection for indoor Dry Traps is the Air Barrier System (Patent # 7,434,811). Using "positive pressure," an air wall is created at the throat of the trap to keep lead particles inside the Deceleration Chamber and out of the air. This "closed loop system" keeps the air within a contained system and does not exhaust tempered air to the outside environment, resulting in energy savings to your HVAC system. The system uses less energy because it is not vacuuming the inside of the chamber and requires less air volume, resulting in a smaller fan motor. When a Wet Trap isn't your choice for an indoor application, a Dry Trap with the Savage Range Systems Air Barrier offers the next best contaminant containment system available today!

Air Flow and Air Wall





Savage Range Systems Rubber Traps

Able to handle up to and including armor piercing .50 BMG, the Savage Range Systems Rubber Trap's flexibility of size, strength, quality of construction and affordability make it an excellent choice for many range situations. The material is 3/4", 99% belt and fiber-free recycled tire rubber. The mild steel frame is made in 4' wide sections and can be extended to suit your range width. The standard trap is nominally 9'4" tall (floor to tip of the over trap baffle). Custom heights are available. For outdoor applications, a level surface is required for supporting the frame - it could be asphalt, concrete, or well compacted and stabilized earth. Savage Range Systems Rubber Traps can also be overlayed onto an existing earth berm.





- **Shoot Houses**
- **Nexgen Target Control**
- **Pneumatic Targets**





Savage Range Systems Shoot Houses

Our generous use of steel plating results in shoot houses that are virtually indestructible, allowing multiple live-fire teams to operate simultaneously in different rooms safely, without rounds fired by one team reaching another. Our lap joint, steel-bolted-to-steel design eliminates gaps and contains every ounce of splatter wherever the shooting takes place. You will find the same quality of construction in the doors and windows, which can be made bullet-proof. We can customize the interiors with hallways, offices, bedrooms, bathrooms - anything to help simulate an operational setting. Once erected, you can install target systems to create the most realistic instructional environment possible. The modular design even provides the option of changing the floor plan in the future or, if needed, moving the facility to a different location. Safety, durability and flexibility! Three reasons why our shoot houses are the superior choice.

Quality, strength and durability built into every house:

- Walls are; 10' or 12' high
- All steel is 3/8" or 1/2" thick with Brinell Hardness rating exceeding 500
- Doors and windows can have ballistic covers/shields
- A mechanical breaching door option is designed to withstand manually operated forcible entry tools
- Houses are built upon solid concrete foundations

Catwalk and roof options: The overhead walkway option comes with an exterior stairway leading up to a railed walkway for a clear view of the rooms below, and meets OSHA standards. The roof option is an engineered pole barn with a galvalume roofing system which can be built to withstand up to 130 mph. Trusses are manufactured by a local supplier to meet local wind and snow load requirements. This system provides full-flow ventilation throughout the shoot house. Where there is deficient SDZ we can provide 100% fully contained solutions!





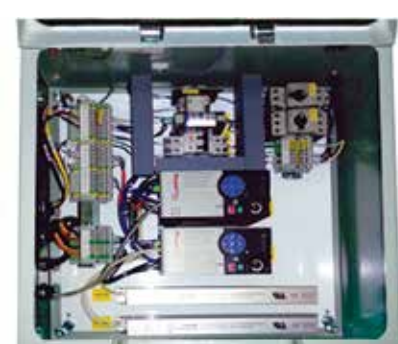
The Valve Control Box is located at the target line. It controls the air supply to the targets and causes the targets to turn. "Course of fire" exercises can be programmed by the Range Master - up to 20 steps for each.



Nexgen Target Control System

The Nexgen Target Control System uses a System Control Platform based on an Allen-Bradley/Rockwell Automations Compact Logix controller, mounted in a NEMA rated steel enclosure for maximum protection bringing outstanding performance and operation to Pneumatic and Running Man Systems like never before. These give you the ability to program multiple "course of fire" exercises - with up to 20 steps in each and storing them for future use. The system operates from a console that can be wall, desk or pedestal mounted, or programmed to a dedicated laptop. Full control and operation downrange is available using an optional tablet (iPad, Surface, etc.) as a remote control, over a dedicated wireless network.

Remarkable programming capability, multiple course of fire functionality, ease of use, remote capability and off-the-shelf maintenance make this the most advanced target control system available... and of course, it's from Savage Range Systems!



The Running Man Control Box feeds the power to the Running Man motors. It is controlled by the PLC (Programmable Logic Controller) in the main control panel. All components are off-the-shelf for ease of repair or replacement, and lower maintenance costs.





PanelView Plus 1000 and iPad



PanelView Plus

The main console houses either an Allen-Bradley PanelView Plus 700 (7" diagonal touch screen), or PanelView Plus 1000 (10" diagonal screen) which displays larger icons to the user. Multiple "course of fires" can be programmed and retained in memory for future use. The control features both a Quick Select and manual function. It's easy to clean, just wipe with a damp cloth. The optional Factory TalkView Machine Edition Station allows a user to operate from a dedicated, locked laptop.

Operator Station Console

- Based on Allen Bradley/Rockwell Automations Compact Logix controller
- The console can be desk, wall, or pedestal mounted
- All components are off-the-shelf; NO proprietary parts used
- Controls are mounted in NEMA rated type 12, 13 painted mild steel enclosures for maximum protection
- Full one-year warranty
- Operates on 120 or 240 volt AC 50/60hz.; uses 24 VDC for control wiring to field devices
- Communicates between the PanelView and the target line (PLC) via an Ethernet (Cat 5e) cable; completely stand alone
- Wiring is labeled and documented; system terminations are done at screw terminals
- Running Man and turning targets can be set to run simultaneously
- Running Man carriers can be programmed to automatically run course with multiple changes in direction and speed; carriers can be coordinated/linked with each other or run completely independently



PanelView Plus 700



Savage Range Systems Targets

The Permanent Running Man System

The rail can be made any length. Two target carriers travel along a 4" aluminum H-beam on 4" solid steel V-groove wheels. On one end, four greaseable pillow block bearing assemblies reduce friction. The system bolts to your concrete slab running the length of the rail. We can handle the complete installation and provide directions for correctly erecting a ballistic barrier leaving only the targets exposed.

Savage Range Systems Pneumatic Targets

Portable and Permanent Versions

We offer portable and permanent versions of the One-Way Turning and Two-Way Turning. Except for the bases, which bolt to a concrete slab, the permanent Pneumatic Targets are identical to the portable versions. For the permanent versions we can handle the installation for you, including safely positioning the targets behind a ballistic barrier.

All pneumatic targets:

- Have their electronics enclosed in a weatherproof box
- Use nylon air lines which last 30 times longer than polypropylene when exposed to UV rays
- Are suitable for both indoor and outdoor training
- Can be floor/ground mounted or overhead mounted
- Uses a 110 volt power source; Uses push-to-connect fittings

The Pivot Mechanism

Instead of a single one-point bushing (with the nasty habit of breaking before ever wearing out), all of our Pneumatic Targets are supported on both ends of the shaft by greaseable, pillow-block bearing assemblies.



Floor-Mounted Version



- Gunsmith Bullet Traps
- Check-It! Clearing Stations
- Boxtraps & Manufacturers Systems
- Forensic Buddy





Model GT

- 27"x 11"x 27"@ 160 lbs
- 3" diameter trap opening
- Handles up to .338Win Mag

Model GO or GHD

- 48"x 18"x 54"@ 470 lbs. or 750 lbs
- 4" diameter trap opening
- Handles up to .460 Wby. Mag or .50 BMG
- Optional replaceable scroll available (GHD only)



Gunsmith Series Bullet Traps

Gunsmith Series Bullet Traps are designed for gun manufacturers, gunsmiths and others needing the strongest, safest, feed and function testing equipment. Units are constructed with fully welded, one-piece construction, steel bodies, from 1/4" thickness in Model GT to 3/8" thickness in Model GO to a beefy 3/4" thickness in Model GHD. Inside each is the Deceleration Chamber to safely and "cleanly" capture spent ammunition, and eliminate the hazards of lead dust. They are designed for close quarters function testing and are low maintenance.

The Model GT is designed for lower volume tabletop use, with mounting holes for added safety. Rounds simply fall into a containment basket after decelerating in the chamber, easily extracted for disposal or recycling. A vent hole on top relieves pressure from muzzle blasts, and can accommodate a shop vacuum for gas extraction, if desired.

The Model GO is a floor unit that can roll next to a workbench for quick use. A pump circulates fluid through the spray bar to lubricate the ramps and the Deceleration Chamber. A tray sits below to capture spent rounds, and there is a side access door for internal inspection. The Model GHD is our "heavy-duty" feed and function testing unit and can handle up to .50BMG! The ability to roll it next to your workbench for testing, or off to the side when not in use, makes it an invaluable tool- the gunsmith never has to leave the shop to perform feed and function testing ever again!

A pump circulates the fluid through the spray bar to lubricate the ramps and the Deceleration Chamber. A tray sits below to capture spent rounds, and there is a side access door for internal inspection. If desired, the unit can be connected to an air extraction system via a 6" diameter connection on the top.

Note: Gunsmith Series Bullet Traps are designed for single tire only, unless otherwise specified.





36" Boxtrap



Proof and Function

Boxtraps and Manufacturers Systems

Savage Range Systems Boxtrap Series and Proof & Function Bullet Traps incorporate Wet Snail™ Technology within the Deceleration Chamber to virtually eliminate lead particles that may be generated before they become airborne and inhaled. This unique system meets and exceeds OSHA standards, protecting employees and shooters.

The Boxtrap Series Bullet Traps are designed for ballistics labs, firearms manufacturers and military facilities that are serious about eliminating environmental health and safety problems. Boxtraps are available with 24'; 36" and 48" square openings. The patented low angle entrance ramps deflect the bullet into the Deceleration Chamber where the bullet revolves, loses energy, then drops into a collection tray. Boxtraps can be rated for use with ammunition up to .50 BMG (full auto).

The Proof & Function Bullet Trap also uses low angle entrance ramps to deflect the bullet into the Deceleration Chamber. Ideal for firearms, ammunition and accessory manufacturers, it creates a clean, safe environment for employees and lower cost maintenance. Great for manufacturers who are serious about eliminating an environmental health and safety problem.

Boxtraps*

- R-Series Boxtraps (24'; 36"; and 48")
- Model 830 (ideal for manufacturers) - Ammunitions up to .460 by Mag and single shot .50 BMG
- Model 850- For full-auto testing of machine guns up to and including .50 BMG
- Fully welded one-piece construction
- Low maintenance
- Self-contained lead recovery tank
- Custom sizes available
- Optional conveyor available

Proof and Function*

- Model PF13,000 - Designed to meet testing or manufacturing requirements for proof loads, single shot, semi-auto, full-auto and large volume firing
- Self-contained lead recovery tank

* Do not use steel core or armor piercing ammunition. Materials and/or specifications are subject to change without notice.

Model F & C

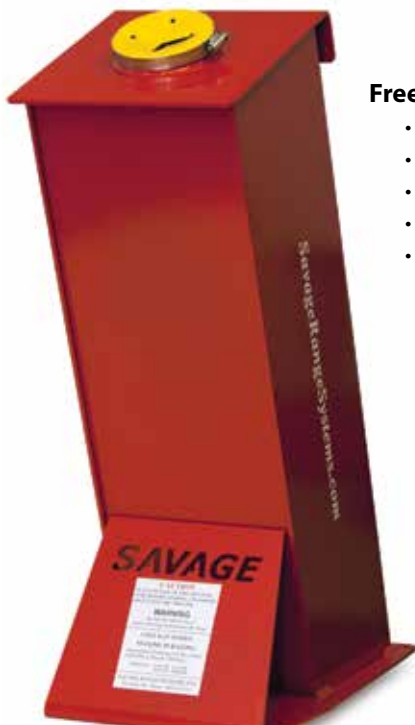




Check-It! Series Clearing Stations

The Check-It! Series Bullet Traps are designed as firearms “clearing stations.” Specially designed as a firearms safety device to ensure that no live ammunition is present before storing or cleaning a firearm, they are perfect for firearms users who care about safety. The Check-It! Bullet Trap safely captures bullets from accidental discharges and eliminates ricochet. Fully welded one-piece construction and low angle entrance ramps deflect the bullet into our patented round Deceleration Chamber where it loses energy and safely drops to the bottom. There are two space-saving designs, the Mini Check-It! for table-top (maximum caliber .480 Ruger) and the Freestanding Check-It! floor model (maximum caliber .444 Marlin).

This patented deceleration system can be fired into at “point blank” range and is nearly impenetrable, providing maximum performance and longevity. This simple, ingenious design has completely revolutionized the bullet trap industry.



Freestanding Check-It!

- 19" x 10" x 27" (10" x 16" base) @ 95 lbs
- 3" shooting port
- Handguns, shotguns and rifles (up to 30-06 Win)
- Rated to 3,000 FPE

Mini Check-It!

- 13" X 4" X 15" @ 33 lbs
- 2.5" shooting port
- Handguns (up to .480 Ruger) and shotguns
- Rated to 1,400 FPE





Deceleration Chamber

Forensic Buddy

Portable Bullet Recovery System for Ballistic Comparison

When you need the best specimen for microscopic comparison, the Forensic Buddy has no equal. The specially engineered, patented bullet trap is designed to absorb the energy of a bullet, while the bullet's integrity remains intact. Whether used in the lab or as a portable unit, the unique ballistic media carefully collects a specimen, resulting in a clean, accurate view of Land and Groove impressions.

Exceptional specimens for microscopic comparison ... to eliminate doubt. That's the Forensic Buddy!

- Portable, less than 60 lbs
- Bullet recovery for ballistic comparison
- Safe capture of all handgun projectiles less than 2,000 FPE at the muzzle
- Quick "shoot and collect" cycle less than 60 seconds
- Exclusive ballistic material
- Cost effective to purchase and maintain
- Environmentally safe



SavageRangeSystems.com

We provide consulting and design services - from crime labs and OEM (Original Equipment Manufacturers) to law enforcement and commercial ranges to specialty test facilities for military and manufacturing clients. Our design team will assist in selecting the optimum combination of bullet traps, safety ceilings and baffles to match your requirements. Also, maintenance agreements can be customized to suit your unique facility requirements.





Savage Range Systems
100 Springdale Road
Westfield, MA 01085
T: 800-370-0712 F: 413-562-1152



Printed in USA