



# Secure Display Cases

*for Firearms*





**BEAUTY  
STRENGTH  
LOSS PREVENTION**





# TDL™ Series Secure Display Cases

It is an unfortunate fact-of-life that Firearms retailers are highly targeted by thieves.

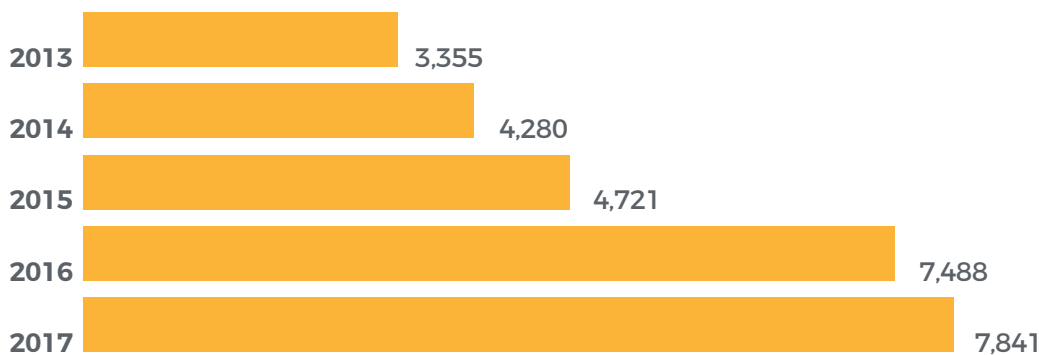
News of “**smash and grab**” burglaries resulting in dramatic losses in a matter of seconds are driving Loss Prevention Departments to search for new ways to secure merchandise.

Jahabow’s **TDL™ (THEFT DETERRENT LEVEL™)** Series of Secure Display Cases sets the industry standard for safeguarding your inventory from theft.

With **proven results** and **tested performance**, you will have peace of mind that you are improving **Loss Prevention** efforts.

## Gun Dealers Face Thieves

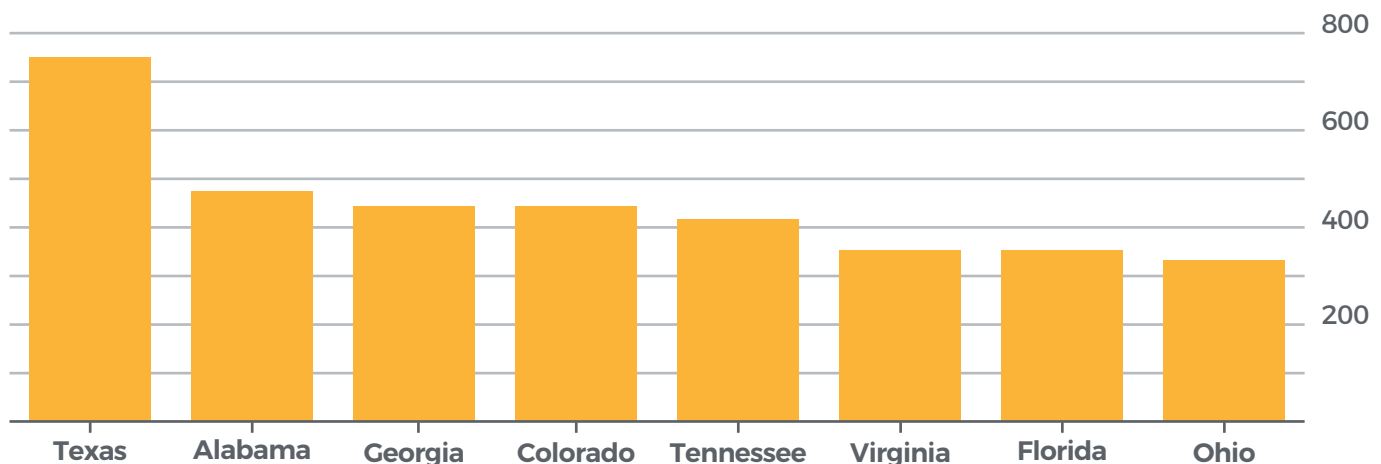
The number of firearms burglarized from licensed dealers is on the rise.



Source: ATF

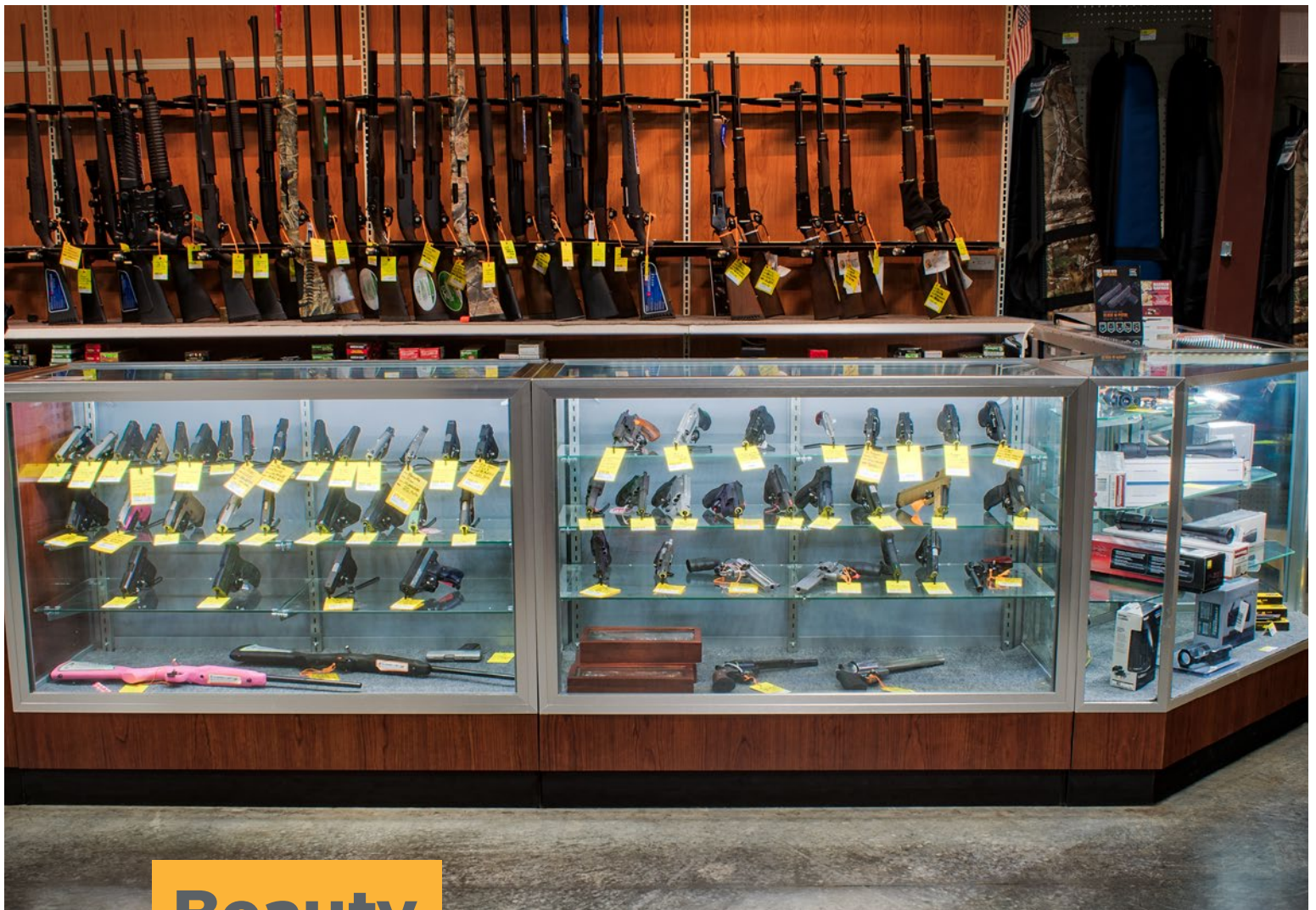
## States with Most Gun Burglaries

The states with the largest quantities of firearms burglarized from licensed dealers in 2017.



Source: ATF





## Beauty

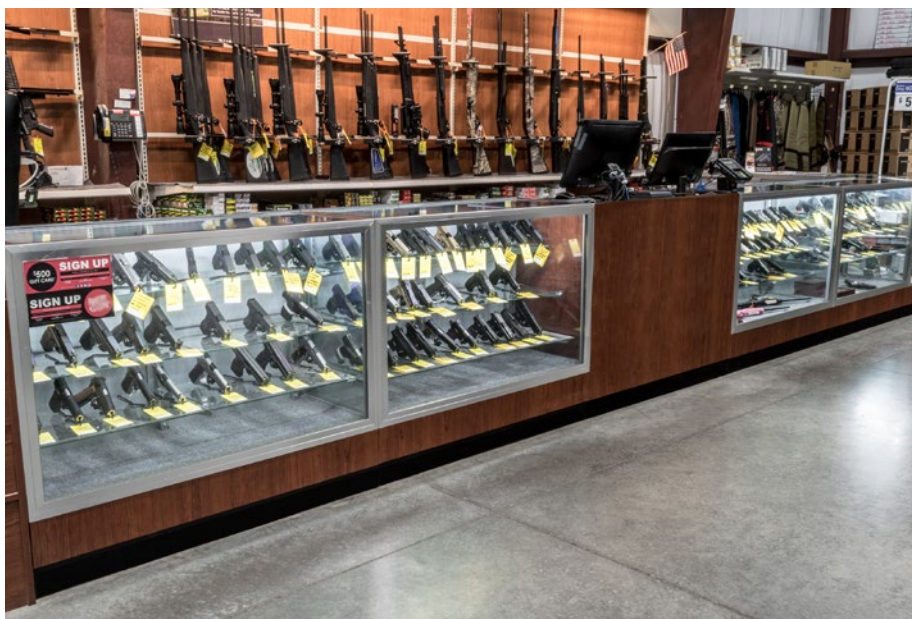
You want your products to look amazing for your customers, and we want the same thing. We specialize in **custom case configurations** that fit the look and needs of your store.

The options to customize the look of the TDL™ Secure Display case to suit your needs is **only limited by your imagination.**



Secure  
Display Cases  
*for Firearms*

# BEAUTY



## DECK & BASE OPTIONS

We offer a variety of deck and bases finishes. These can be a mix of our standard laminate finishes to custom finishes. Storage doors and drawer options can also be incorporated based on your specific needs.

*“We specialize in custom case configurations that fit the look and needs of your store”*

## FLEXIBILITY & SIZING

The extruded frame of the **TDL** Secure Display Case provides new capability to produce showcases in multiple sizes and styles. We can provide Jewelry, Half Vision, Full Vision, Extra Vision and Upright Secure Cases depending upon your needs.

## COLOR

We offer a variety of color options for **TDL** Secure Display Cases including brushed aluminum in silver or black.



## SHELVING

The slotted standards inside each **TDL** Secure Display Case allow you to choose from a variety of shelf layouts.

## LIGHTING

Lighting for each **TDL** Secure Display Case can seamlessly be incorporated into the frame to create lighting options you won't even know are there. Our industry leading LED lighting options guarantee your products will look impeccable.



## DOOR OPTIONS

Customize the reinforced doors by choosing from mirrored or colored laminates applied to the interior or exterior door surfaces.

## ELECTRICAL

Multiple wiring options are available. Electrical components can be concealed with easy access panels for consistent look.







## Strength

Jahabow is building upon our long history of engineering and constructing security cases with our new **TDL Secure Display Cases**. **High quality engineering** plus the combination of frame, glass, locks and reinforced doors provide the foundation for **proven security** in our showcases.

Up until now, classifying levels of security in display cases has been a subjective conversation. No more. As the industry leader in Secure Display Cases, we have created our own classification system called **THEFT DETERRENT LEVEL or TDL**. This classification system illustrates how our Secure Display Cases perform under common stresses.

As the **TDL** rating of the case increases, so do your efforts to **achieve improved Loss Prevention**.



**Secure  
Display Cases**  
*for Firearms*

# STRENGTH



*“High quality engineering plus the combination of frame, glass, locks and reinforced doors provide the foundation for proven security”*

## FRAME

Our frame acts as the foundation for all of our display cases. The **TDL** Secure Display Case frame consists of a one-piece aluminum extrusion, which adds significant strength and durability.

## GLASS

Varying combinations of Safety Glass, Hurricane Glass, and Polycarbonate provide three **THEFT DETERRENT LEVELS** that dramatically improve security over a standard tempered glass showcase.

## LOCKS

Locking mechanism becomes the third component of strength. The interior locking component of the **TDL** Secure Display Case is incorporated into the steel slotted standard, upgrading the lock strength. The exterior lock is flush with the door to prevent access to through prying.

TDL Series	Description	Theft Deterrent Rating	Improvement over Standard Showcases
Baseline	Tempered Glass Showcase	582	Baseline
TDL Level 1	Hurricane Glass*	998	71%
TDL Level 2	Hurricane + Safety Glass	1,675	188%
TDL Level 3	Hurricane + Polycarbonate	2,277	291%

## REINFORCED DOORS

The doors on the back of the unit provide our final component of strength. The doors are made of solid, machined aluminum which makes them less prone to access via prying or repeated pounding.

**Greater TDL™ rating equals greater peace of mind for Loss Prevention.**



Secure  
Display Cases  
for Firearms



## Loss Prevention

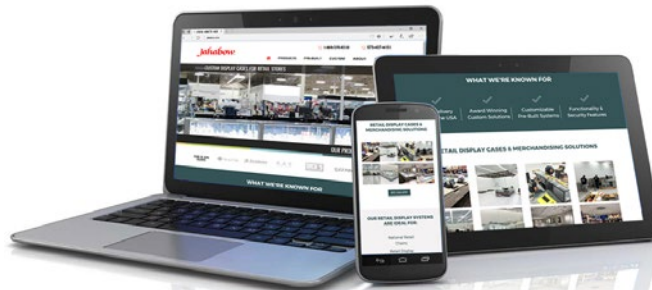
Balancing the beauty and strength of our **TDL Secure Display Cases** to compliment your service and sales performance, is a critical aspect of effective Loss Prevention.

***Reliable Physical Security***

***Reduced Business Interruption Costs***

***Fewer claims result in lower insurance premiums***

Ask yourself if repairing the case is more cost effective than replacing the merchandise. If so, **contact us today.**



Check out the all new **Jahabow.com** and Jahabow's YouTube page to see the new **TDL™ Secure Display Case** in action!

**Jahabow™**

Jahabow | 1004 Industrial Dr. Owensville, MO 65066 | 573.437.4151 | Jahabow.com